



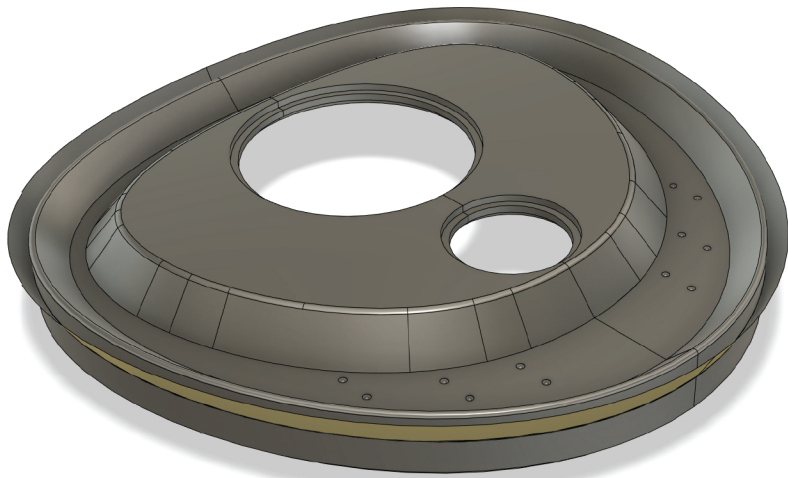
# B BUTLER

Never lose sight of your daily essentials: keys, wallet, and a charged phone

Features an articulating base, motion sensing tray illumination, and a removable charging battery port

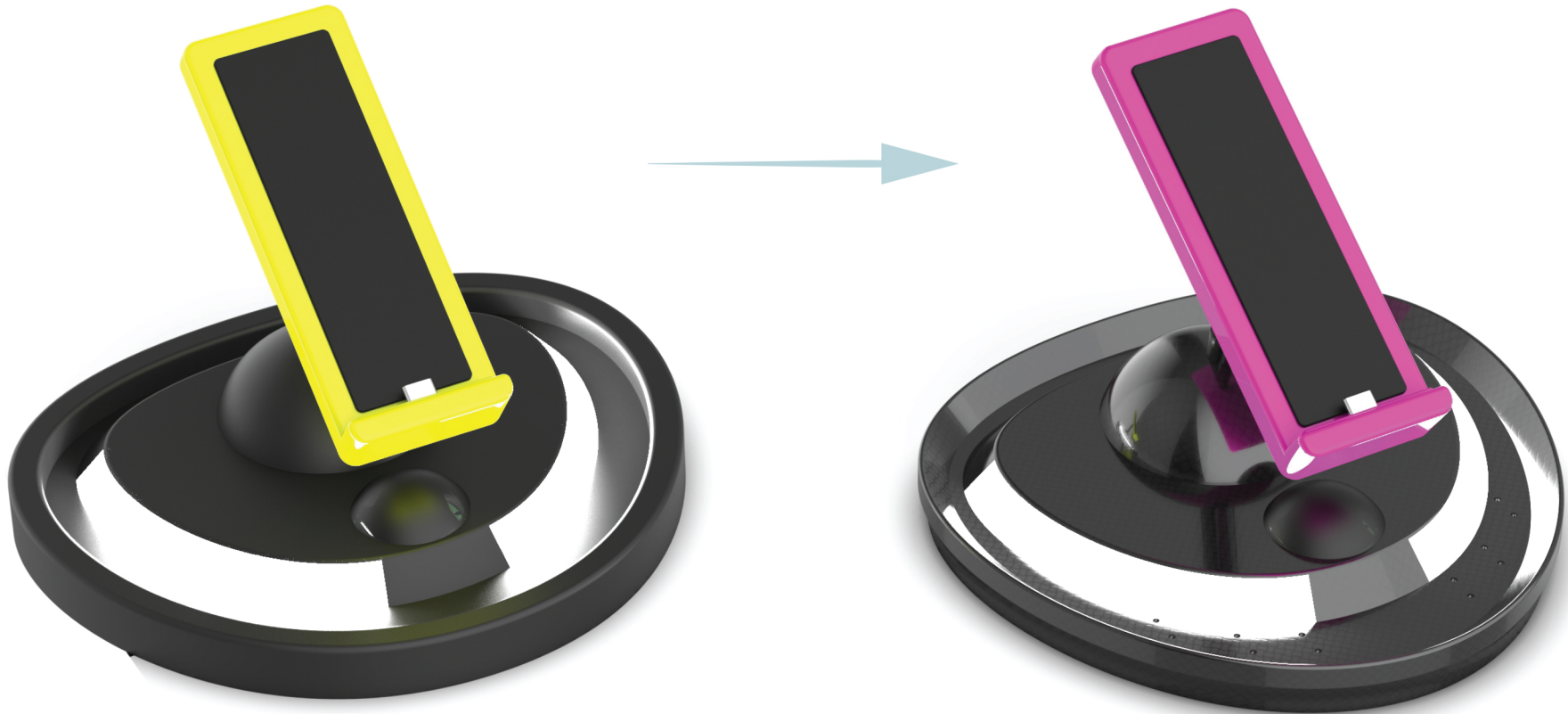
# Cradle Design Concept

Using Surface Modeling To Redesign; Securing Electronics;  
Working Towards 5-3-2-1 Rule; Creating Studios For Rendering



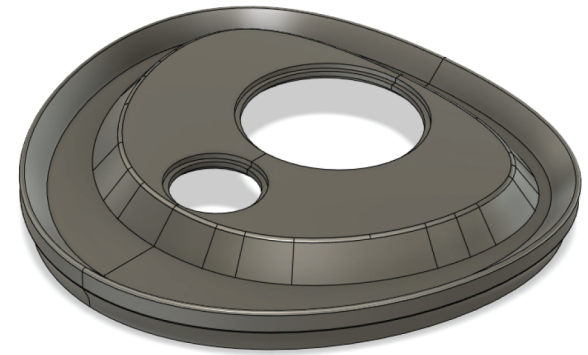
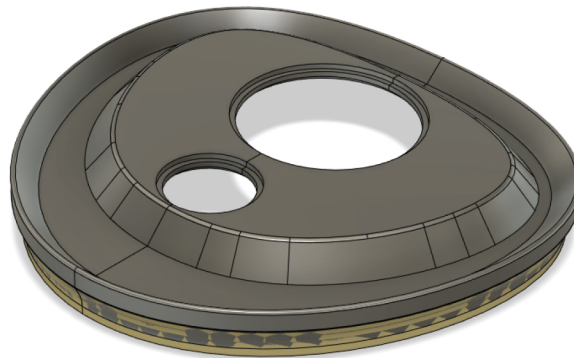
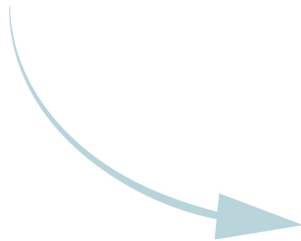
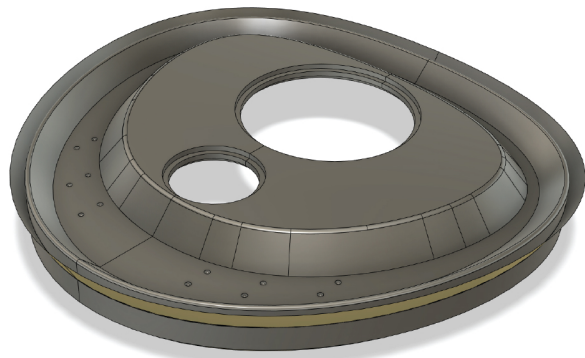
# Cradle Design Concept

**First Round Of Redesign:** Surface Cut, Interior Details,  
& Parting Lines



# Cradle Design Concept

**Surface Modeling:** Built New Base Solid From Surfaces;  
Redefined Base Using Surfaces To Intersect & Trim



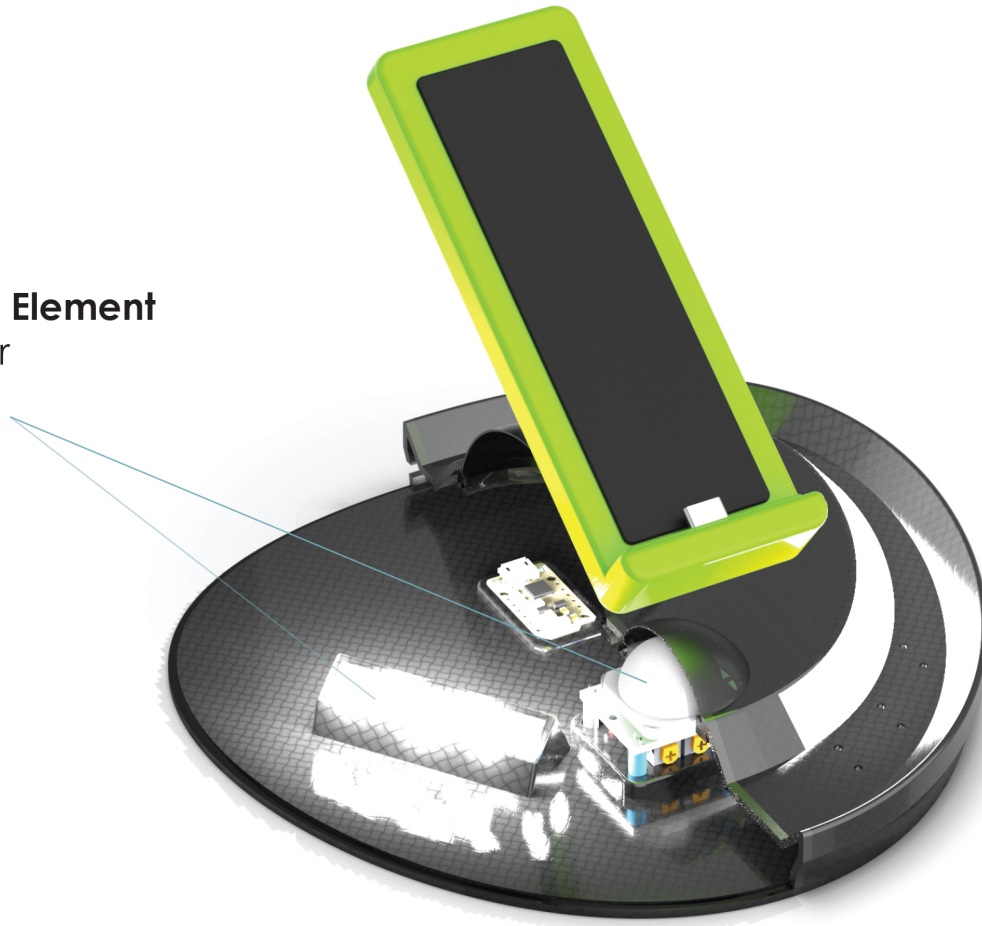


# Cradle Design Concept

**Model Building:** Wall Thickness, Component Orientation, Parting Lines, and Nesting of Parts

## Cutaway Illustrating Interactive Element

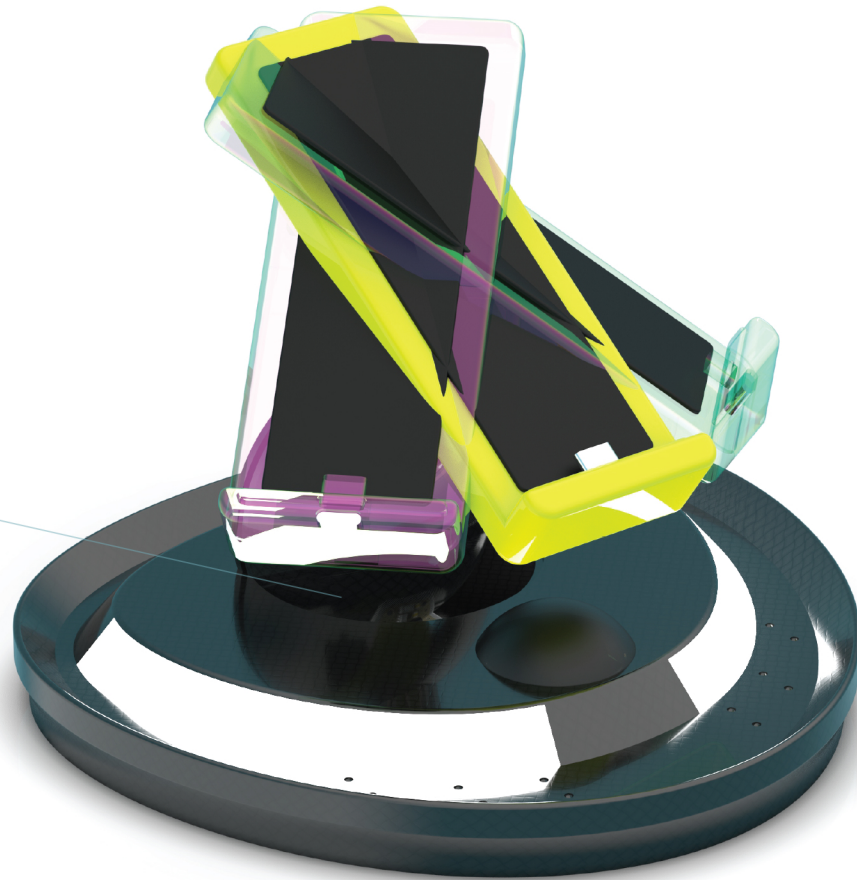
LEDs Illuminate When PIR Sensor  
Detects Nearby Motion



# Cradle Design Concept

## Articulation

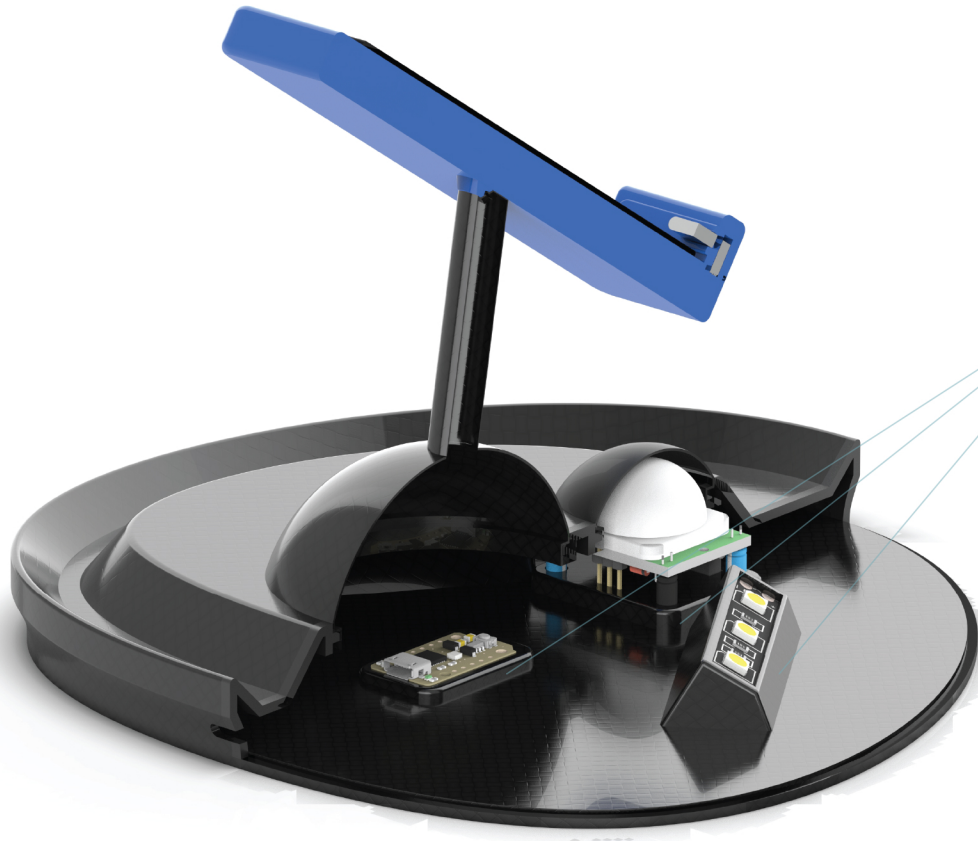
Cradle Form Rotates 45 Degrees  
Left & Right From Center Using  
The "Rotating Cup"



# Cradle Design Concept

## Interior Details

Electronics Placement & Access



Cradles Created For All Current  
Electronic Components

# Cradle Design Concept

## Interior Details

### Purchase Parts

#### **Purchase Parts (current):**

- 2: 30-pin dock connectors (male)
- 1: 30-pin dock connector (female)  
inside the Charger

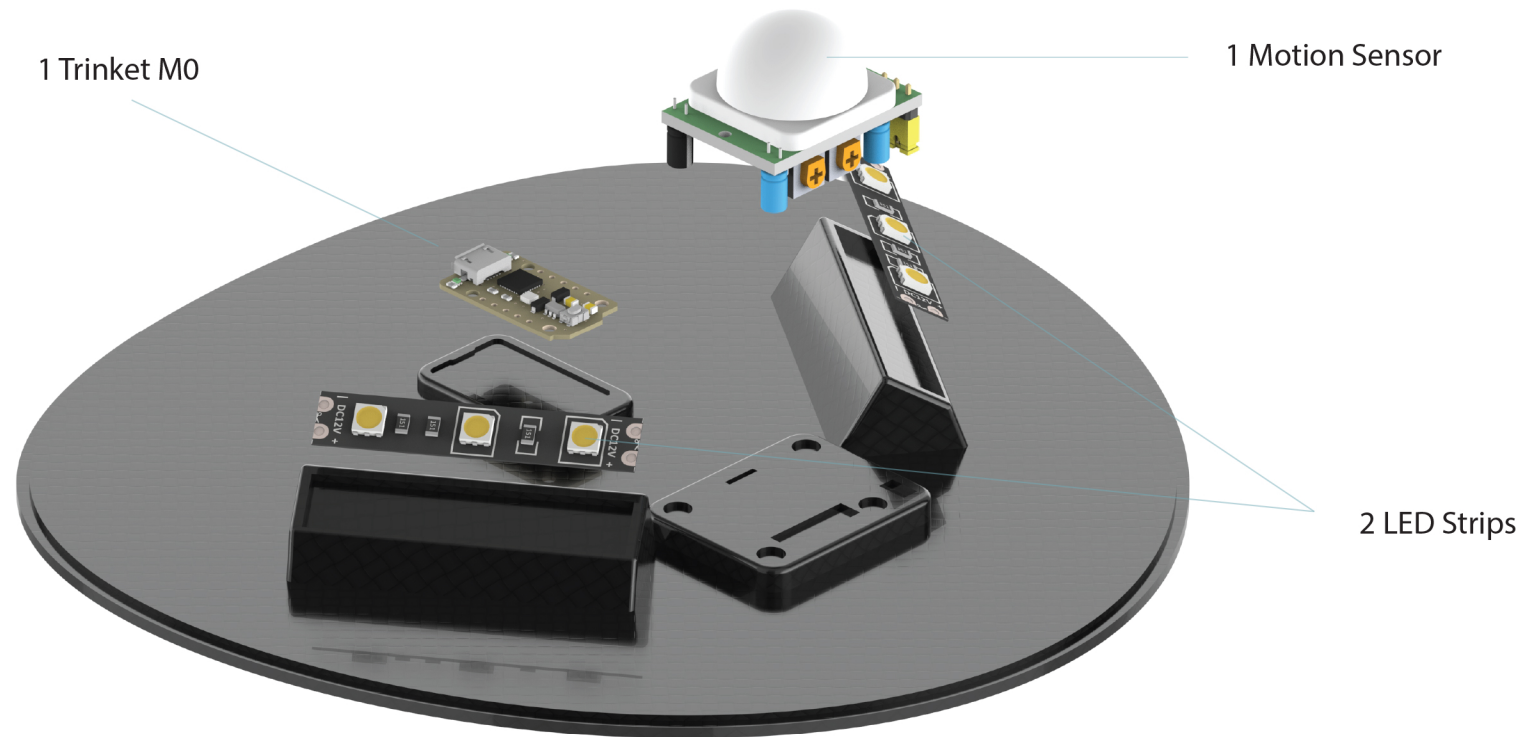
Will redo if screws, etc are req.





# Cradle Design Concept

## Electronic Components



# Cradle Design Concept

## Studios, Scenes, Environments Setup

